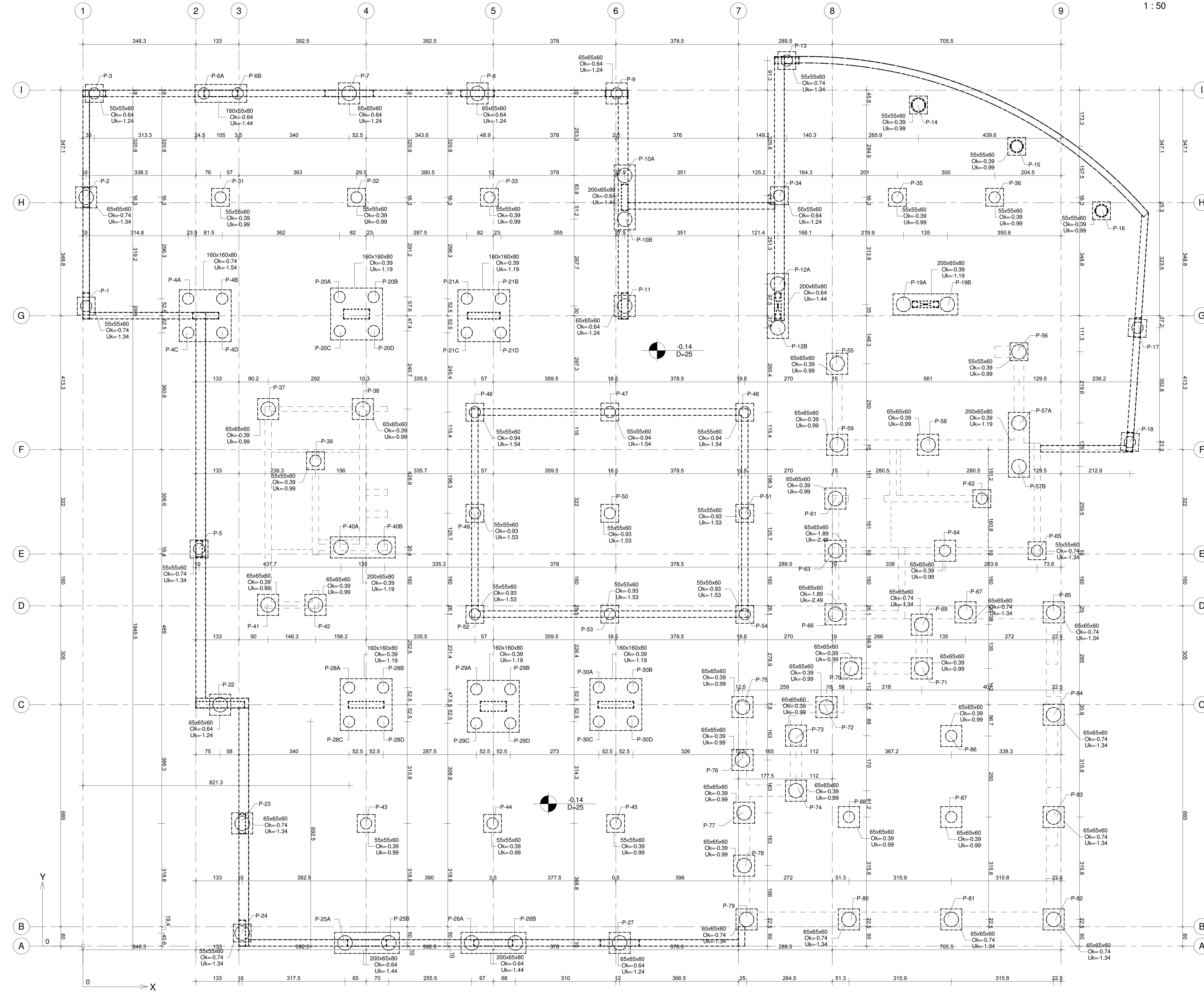


מספר	תאריך	מחול שינוי	החזרה	הסבר
1	06.07.17	לעיון	1	מהנדס קרקע
2	06.07.17	update	4	המהנדס

מתווה 01sm
1:50



מספר כלונס	מיקום	קוטר	X	Y	עומק
מ	מ	ס"מ	קוורטר	קוורטר	מ

-1.19	3.0	35	10.0	1975.0	19	P-1
-1.19	8.0	45	10.0	2310.5	113	P-2
-1.09	3.0	35	35.0	2631.3	22	P-3
-1.39	4.0	35	324.8	1997.9	38	P-4A
-1.39	4.0	35	429.8	1997.9	38	P-4B
-1.39	4.0	35	324.8	1892.9	38	P-4C
-1.39	4.0	35	429.8	1892.9	38	P-4D
-1.19	5.0	35	358.3	1225.5	47	P-5
-1.29	6.0	35	372.8	2631.3	61	P-6A
-1.29	6.0	35	477.8	2631.3	61	P-6B
-1.09	8.0	45	821.3	2631.3	111	P-7
-1.09	8.0	45	1217.4	2631.3	111	P-8
-1.09	5.0	35	1646.8	2631.3	48	P-9
-1.29	7.0	45	1671.8	2378.0	87	P-10A
-1.29	7.0	45	1671.8	2243.0	87	P-10B
-1.09	8.0	45	1671.8	1975.4	110	P-11
-1.29	6.0	45	2144.2	2042.9	75	P-12A
-1.19	5.0	35	2142.2	1907.9	75	P-12B
-1.19	5.0	35	2172.0	2732.6	51	P-13
-0.84	6.0	45	2578.2	2595.5	80	P-14
-0.84	5.0	35	2881.3	2468.0	43	P-15
-0.84	6.0	35	3142.9	2268.9	66	P-16
-1.09	6.0	35	3254.0	1908.2	63	P-17
-1.09	4.0	35	3230.7	1555.4	32	P-18
-1.04	7.0	45	2532.2	1980.4	91	P-19A
-1.04	7.0	45	2667.2	1980.4	91	P-19B
-1.04	6.0	35	791.8	2003.0	63	P-20A
-1.04	6.0	35	896.8	2003.0	63	P-20B
-1.04	6.0	35	752.4	1898.0	63	P-20C
-1.04	6.0	35	897.4	1898.0	63	P-20D
-1.04	5.0	35	1184.3	1997.9	53	P-21A
-1.04	5.0	35	1289.3	1997.9	53	P-21B
-1.04	5.0	35	1184.3	1892.9	53	P-21C
-1.04	5.0	35	1289.3	1892.9	53	P-21D
-1.09	6.0	45	423.3	745.0	72	P-22
-1.19	8.0	45	491.3	378.8	108	P-23
-1.19	6.0	45	491.3	40.6	24	P-24
-1.29	7.0	45	806.8	10.0	62	P-25A
-1.29	7.0	45	943.8	10.0	62	P-25B
-1.29	7.0	45	1190.3	10.0	58	P-26A
-1.29	7.0	45	1334.3	10.0	58	P-26B
-1.09	7.0	45	1656.3	10.0	99	P-27
-1.04	6.0	35	821.3	797.5	62	P-28A
-1.04	6.0	35	926.3	797.5	62	P-28B
-1.04	6.0	35	821.3	692.5	62	P-28C
-1.04	6.0	35	926.3	692.5	62	P-28D
-1.04	6.0	35	1213.8	792.5	58	P-29A
-1.04	6.0	35	1318.8	792.5	58	P-29B
-1.04	6.0	35	1213.8	687.5	58	P-29C
-1.04	6.0	35	1318.8	687.5	58	P-29D
-1.04	6.0	35	1591.8	798.1	59	P-30A
-1.04	6.0	35	1696.8	798.1	59	P-30B
-1.04	6.0	35	1591.8	693.1	59	P-30C
-1.04	6.0	35	1696.8	693.1	59	P-30D
-0.84	6.0	35	424.3	2310.5	58	P-31
-0.84	5.0	35	844.3	2310.5	49	P-32
-0.84	6.0	35	1254.3	2310.5	50	P-33
-1.09	4.0	35	2148.0	2315.5	37	P-34
-0.84	4.0	35	2513.3	2310.5	31	P-35
-0.84	4.0	35	2813.3	2310.5	31	P-36
-0.84	6.0	45	571.5	1657.3	45	P-37
-0.84	8.0	45	863.5	1657.3	106	P-38
-0.84	6.0	35	717.6	1497.8	50	P-39
-1.04	6.0	45	796.0	1230.4	85	P-40A
-1.04	6.0	45	891.0	1230.4	85	P-40B
-0.84	8.0	45	571.3	1053.0	100	P-41
-0.84	8.0	45	717.6	1053.0	62	P-42
-0.84	5.0	35	873.8	378.8	53	P-43
-0.84	5.0	35	1263.8	378.8	49	P-44
-0.84	5.0	35	1643.8	378.8	47	P-45
-1.39	3.0	35	1209.3	1647.5	26	P-46
-1.39	3.0	35	1625.8	1648.0	11	P-47
-1.39	3.0	35	2042.3	1647.5	23	P-48
-1.38	3.0	35	1209.3	1335.7	16	P-49
-1.38	3.0	35	1625.8	1335.7	30	P-50
-1.38	3.0	35	2042.3	1335.7	12	P-51
-1.38	3.0	35	1209.3	1024.0	23	P-52
-1.38	3.0	35	1625.8	1024.5	14	P-53
-1.38	3.0	35	2042.3	1024.0	18	P-54
-0.84	6.0	45	2327.3	1797.0	69	P-55
-0.84	8.0	45	2888.3	1834.1	113	P-56
-1.04	8.0	45	2888.3	1614.5	66	P-57A
-1.04	8.0	45	2888.3	1479.5	66	P-57B
-0.84	8.0	45	2607.8	1547.0	118	P-58
-0.84	7.0	45	2327.3	1547.0	91	P-59
-0.84	8.0	45	2321.8	1381.0	101	P-61
-0.84	3.0	35	2773.8	1390.8	19	P-62
-2.34	8.0	45	2322.3	1220.0	105	P-63
-0.84	4.0	35	2690.2	1220.0	41	P-64
-1.19	4.0	35	2944.2	1220.0	45	P-65
-2.34	8.0	45	2322.3	1024.0	100	P-66
-1.19	7.0	45	2723.3	1030.0	90	P-67
-1.19	8.0	45	2568.3	992.0	92	P-69
-0.84	7.0	45	2370.3	857.0	80	P-70
-0.84	8.0	45	2568.3	857.0	92	P-71
-0.84	7.0	45	2294.3	737.5	115	P-72
-0.84	8.0	45	2200.3	649.5	115	P-73
-0.84	8.0	45	2035.3	479.5	115	P-74
-0.84	7.0	45	2035.3	737.5	72	P-75
-0.84	8.0	45	2035.3	574.5	115	P-76
-0.84	8.0	45	2040.3	411.5	115	P-77
-0.84	8.0	45	2040.3	248.5	109	P-78
-1.19	8.0	45	2047.8	82.5	102	P-79
-1.19	8.0	45	2363.6	82.5	96	P-80
-1.19	7.0	45	2679.5	82.5	108	P-81
-1.19	7.0	45	2995.3	82.5	93	P-82
-1.19	8.0	45	2995.3	398.4	110	P-83
-1.19	7.0	45	2995.3	714.2	94	P-84
-1.19	7.0	45	2995.3	1030.0	83	P-85
-0.84	4.0	35	2679.5	648.4	32	P-86
-0.84	4.0	35	2679.5	398.4	34	P-87
-0.84	4.0	35	2363.6	398.4	33	P-88

P-13	2733
P-3	2631
P-7	2631
P-9	2631
P-8	2631
P-6B	2631
P-6A	2631
P-14	2595
P-15	2468
P-10A	2378
P-34	2316
P-36	2311
P-35	2311
P-2	2311
P-32	2311
P-33	2311
P-31	2311
P-16	2289
P-10B	2243
P-12A	2043
P-20A	2003
P-20B	2003
P-21A	1998
P-21B	1998
P-4A	1998
P-4B	1998
P-16B	1990
P-19A	1990
P-11	1975
P-1	1975
P-12B	1908
P-17	1908
P-20D	1898
P-20C	1898
P-21D	1893
P-21C	1893
P-4D	1893
P-4C	1893
P-56	1834
P-55	1797
P-37	1657
P-38	1657
P-47	1648
P-46	1647
P-48	1647
P-57A	1615
P-18	1555
P-59	1547
P-58	1547
P-39	1498
P-57B	1480
P-62	1381
P-61	1381
P-49	1336
P-50	1336
P-51	1336
P-40A	1230
P-40B	1230
P-5	1225
P-65	1220
P-63	1220
P-64	1220
P-41	1053
P-42	1053
P-65	1030
P-67	1030
P-63	1025
P-52	1024
P-54	1024
P-66	1024
P-69	992
P-70	857
P-71	857
P-28A	798
P-28B	798
P-30A	798
P-30B	798
P-29A	793
P-29B	793
P-22	745
P-75	738
P-72	738
P-84	714
P-80	693
P-29C	693
P-30C	693
P-29D	688
P-29C	688
P-73	650
P-86	648
P-76	575
P-74	480
P-77	412
P-83	398
P-87	398
P-43	379
P-44	379
P-45	379
P-23	379
P-78	249
P-79	83
P-80	83
P-81	83
P-82	83
P-24	41
P-27	10
P-25B	10
P-25A	10
P-26B	10
P-26A	10

P-1	10	35	10.0	1975.0	19	P-1
P-2	10	45	10.0	2310.5	113	P-2
P-3	10	35	35.0	2631.3	22	P-3
P-4	10	35	324.8	1997.9	38	P-4A
P-5	10	35	429.8	1997.9	38	P-4B
P-6	10	35	324.8	1892.9	38	P-4C
P-7	10	35	429.8	1892.9	38	P-4D
P-8	10	35	358.3	1225.5	47	P-5
P-9	10	35	372.8	2631.3	61	P-6A
P-10	10	35	477.8	2631.3	61	P-6B
P-11	10	45	821.3	2631.3	111	P-7
P-12	10	45	1217.4	2631.3	111	P-8
P-13	10	35	1646.8	2631.3	48	P-9
P-14	10	45	1671.8	2378.0	87	P-10A
P-15	10	45	1671.8	2243.0	87	P-10B
P-16	10	45	1671.8	1975.4	110	P-11
P-17	10	45	2144.2	2042.9	75	P-12A
P-18	10	35	2142.2	1907.9	75	P-12B
P-19	10	35	2172.0	2732.6	51	P-13
P-20	10	45	2578.2	2595.5	80	P-14
P-21	10	35	2881.3	2468.0	43	P-15
P-22	10	35	3142.9	2268.9	66	P-16
P-23	10	35	3254.0	1908.2	63	P-17
P-24	10	35	3230.7	1555.4	32	P-18
P-25	10	45	2532.2	1980.4	91	P-19A
P-26	10	45	2667.2	1980.4	91	P-19B
P-27	10	35	791.8	2003.0	63	P-20A
P-28	10	35	896.8	2003.0	63	P-20B
P-29	10	35	752.4	1898.0	63	P-20C
P-30	10	35	897.4	1898.0	63	P-20D
P-31	10	35	1184.3	1997.9	53	P-21A
P-32	10	35	1289.3	1997.9	53	P-